

## Flow rate sensors for fluid media with an end value of 1...10 l/min | SDN 510 GSP

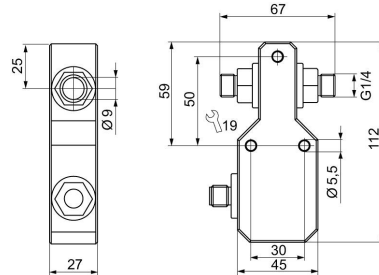
- Flow rate sensor with amplifier
- Robust, compact housing from glass fibre reinforced PBT
- Switching output PNP-NO
- Detection range 0,01...6 l/min



<b>TYPE</b>	SDN 510 GSP
<b>Product ID</b>	P11248
<b>Medium</b>	Water
<b>Detection range water</b>	0.01 ... 6 l/min
<b>Working range</b>	0.1 ... 6 l/min
<b>Inner diameter d</b>	9 mm
<b>Process connection</b>	G1/4
<b>Sensor length L</b>	68 mm
<b>Output</b>	switching output
<b>Output function</b>	PNP-NO
<b>Supply voltage</b>	24 VDC +/- 10 %
<b>Current consumption max.</b>	50 mA
<b>Switching current max.</b>	200 mA (20 °C)
<b>Reverse polarity protection</b>	✓
<b>Voltage drop max.</b>	2.5 V
<b>Ambient temperature</b>	0 ... 60 °C
<b>Medium temperature</b>	0 ... 80 °C
<b>Temperature gradient fluids</b>	400 K/min
<b>Start-up time typ.</b>	5 ... 15 s
<b>Reaction time typ.</b>	1 s (0.5 ... 10 s)
<b>Compressive strength</b>	20 bar

<b>Material sensor touched by medium</b>	stainless steel AISI 316 Ti
<b>Material housing</b>	PBT
<b>Protection [EN 60529]</b>	IP 67
<b>Electrical connection</b>	M12 connector
<b>Accessories</b>	connecting cable SLG, SLW, SBG, SBW, mounting bracket
<b>Accessories (in scope of delivery)</b>	4 x gasket G1/4 AFM 34, Screwdriver

Technical Image



Pin Map

