

Flow rate sensors for fluid media with an end value of 1...10 l/min | SD 510 S

- Flow rate sensor without amplifier
- Robust housing from glass fibre reinforced PBT
- No parts protruding into the flow
- Design for connection to amplifier series SKM 500
- Flow rate monitoring in cooling circuits with small pipe diameters
- Flow rate monitoring in the cooling circuit of melting furnaces
- Detection range: 0,2...6 l/min



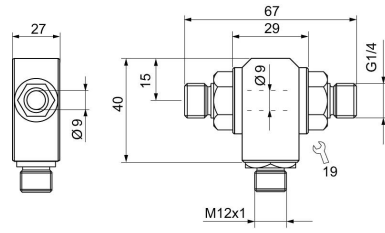
G1/4 - 0,01...6 l/min - M12 connector

TYPE	SD 510 S
Product ID	P11252
Medium	Water
Detection range water	0.01 ... 6 l/min
Working range	0.2 ... 6 l/min
Inner diameter d	9 mm
Process connection	G1/4
Sensor length L	68 mm
Ambient temperature	-20 ... 70 °C
Medium temperature	0 ... 80 °C
Temperature gradient fluids	300 K/min
Start-up time typ.	5 s (0 ... 0 s)
Reaction time typ.	1 s (0.5 ... 10 s)
Compressive strength	20 bar
Material sensor touched by medium	stainless steel AISI 316 Ti
Material housing	PBT
Protection [EN 60529]	IP 67
Electrical connection	M12 connector
Accessories (in scope of delivery)	4 x gasket G1/4 AFM 34

Associated amplifiers

SKM..., SKZ...

Technical Image



Pin Map

