

Flow rate sensors for fluid media with an end value of 1...10 l/min | SDN 506 GSP-CER

- Flow rate sensor with amplifier
- Robust housing from glass fibre reinforced PBT
- Ceramic measuring cell, metal free in contact with media
- Schaltausgang PNP-Schließer
- Detection range 0,005...3 l/min

G1/4 PTFE/ceramic - 0,005...3 l/min - PNP-NO

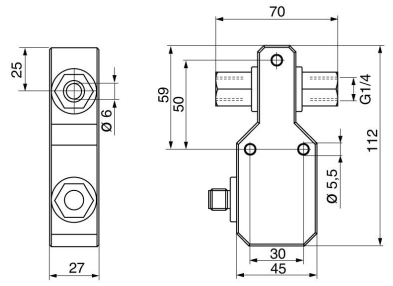


TYPE	SDN 506 GSP-CER
Product ID	P11262
Medium	Water, oil, non conductive Media, aggressive Media
Detection range water	0.005 ... 3 l/min
Working range	0.02 ... 3 l/min
Inner diameter d	6 mm
Process connection	G1/4
Sensor length L	70 mm
Output	switching output
Output function	PNP-NO
Supply voltage	24 VDC +/- 10 %
Current consumption max.	50 mA
Reverse polarity protection	✓
Voltage drop max.	2.5 V
Ambient temperature	0 ... 60 °C
Medium temperature	0 ... 60 °C
Temperature gradient fluids	400 K/min
Start-up time typ.	5 ... 15 s
Reaction time typ.	1 s (0.5 ... 10 s)
Compressive strength	5 bar

Material sensor touched by medium	AL2O3, FPM, PTFE
Material housing	PBT
Protection [EN 60529]	IP 67
Electrical connection	M12 connector
Accessories	connecting cable SLG, SLW, SBG, SBW

Accessories (in scope of delivery)
4 x gasket G1/2 AFM 34, screwdriver

Technical Image



Pin Map

