

## Flow rate sensors for fluid media with an end value of 1...10 l/min | SDN 506 GR-CER

- Flow rate sensor with amplifier
- Robust housing from glass fibre reinforced PBT
- Ceramic measuring cell, metal free in contact with media
- Relay output
- Detection range 0,005...3 l/min

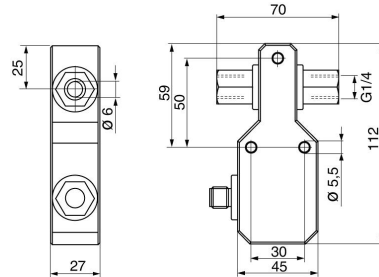


<b>TYPE</b>	SDN 506 GR-CER
<b>Product ID</b>	P11275
<b>Medium</b>	Water
<b>Detection range water</b>	0.005 ... 3 l/min
<b>Working range</b>	0.02 ... 3 l/min
<b>Inner diameter d</b>	6 mm
<b>Process connection</b>	G1/4
<b>Output</b>	switching output
<b>Output function</b>	relay
<b>Supply voltage</b>	24 VDC +/- 10 %
<b>Current consumption max.</b>	50 mA
<b>Switching voltage max.</b>	30 VAC / 36 VDC
<b>Switching current max.</b>	1000 mA
<b>Reverse polarity protection</b>	✓
<b>Ambient temperature</b>	0 ... 60 °C
<b>Medium temperature</b>	0 ... 60 °C
<b>Temperature gradient fluids</b>	400 K/min
<b>Start-up time typ.</b>	5 ... 15 s
<b>Reaction time typ.</b>	1 s (5 ... 5 s)
<b>Compressive strength</b>	5 bar

<b>Material sensor touched by medium</b>	AL2O3, FPM, PTFE
<b>Material housing</b>	PBT
<b>Protection [EN 60529]</b>	IP 67
<b>Electrical connection</b>	M12 connector
<b>Accessories</b>	connecting cable SLG, SLW, SBG, SBW

**Accessories (in scope of delivery)**  
screwdriver

Technical Image



Pin Map

