

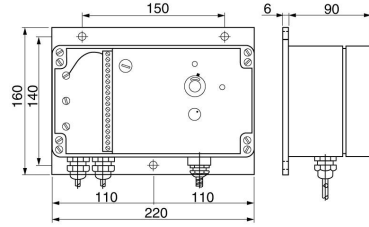
Infrared detectors for analogue temperature measurement | ODE 350 GWR

- Detection range 300...2000 °C
- For the contactless temperature measurement using optics and optic fibre cables
- Analogue output and switching output,
- Adjustable switching threshold
- Optic fibre cable and optics resistant to high temperatures
- For the contactless temperature monitoring in processes
- For the contactless temperature measurement of very hot objects



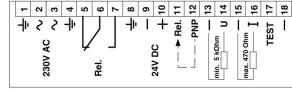
| | |
|----------------------------------|--|
| TYPE | ODE 350 GWR |
| Product ID | P60031 |
| Detection range °C | 300 ... 2000 °C |
| Response time max. | 100 ms |
| Output | analog output 4...20 mA, analog output 0...10 V, 2 x switching output |
| Output function | relay, PNP-NO |
| Relay output AC data | switching output max. 440 V, current max. 8 A, nominal switching power 2000 VA (AC-12) |
| Relay output DC data | switching output max. 250 V, current max. 8 A, nominal switching power 240 VA (AC-12) |
| Supply voltage | 230 VAC, 24 VDC |
| Power consumption | 6 VA |
| Switching voltage DC max. | 250 VDC |
| Current sensitivity | 1.8 mA/V |
| Ambient temperature | -20 ... 70 °C |
| EMC-class | A |
| Protection [EN 60529] | IP 67 |

Technical Image



Pin Map

Anschlussbelegung / Connections



Rel. Relais-Ausgang / Relay output Schaltschwelle / switching threshold
 PNP PNP-Ausgang / PNP output Schaltschwelle / switching threshold
 I Strom-Ausgang / Current output 20 mA gegen (-) / 20 mA ref. (-)
 U Spannungs-Ausgang / Voltage output 10 V gegen (-) / 10 V ref. (-)