

## Amplifier for Detector coils | MDV 3220 WR2

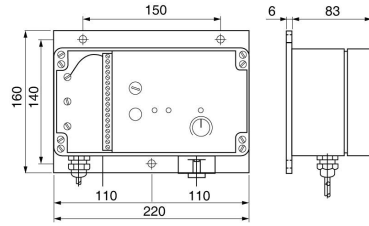
- Analysis unit for metal detector system 3000
- For the protection of cutters, grinders, rollers or crushers against metal parts
- Automatic regulation adaption
- With sensitivity adjustment knob
- Test button



### 230 V AC - relay changeover

<b>TYPE</b>	MDV 3220 WR2
<b>Product ID</b>	P81060
<b>Output</b>	switching output
<b>Output function</b>	relay
<b>Supply voltage</b>	230 VAC +/- 10%
<b>Current consumption max.</b>	20 mA
<b>Switching current max.</b>	2 A DC, 1 A AC
<b>Switching power max.</b>	1000 VA / 60 W (cos φ = 1)
<b>Ambient temperature</b>	-25 ... 70 °C
<b>EMC-class</b>	A
<b>Material housing</b>	aluminum
<b>Display</b>	LED
<b>Protection [EN 60529]</b>	IP 67
<b>Electrical connection</b>	2 m PVC-cable 7x0.5 mm <sup>2</sup>
<b>Note</b>	With the potentiometer it is possible to adjust the sensitivity. The amplifier MDV 3220 has a relay-change over-function. During metal detection, the relay is activated and contact 4-5 is closed (2-5 is open)., By pushing the test button it is possible to test the complete function of the MDV 3220.

Technical Image



Pin Map

