

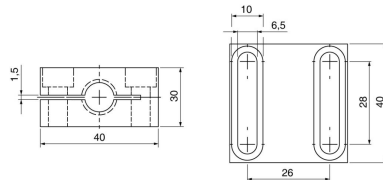
Accessories for inductive and kapacitive sensors | KBM 018 A-ST52

- Impact- and shock resistant, protected installation of inductive sensors
- Simple adjustment via slotted holes
- Mount and replace sensor quickly and precicely



TYPE	KBM 018 A-ST52
Product ID	Z01210
Description	mounting clamp for metal face sensors
Note	Mounting clamps are fastened to their metal surface using M6 hexagon socket screws. Make sure that the provided stainless steel washers have been placed in-between. The typical torque is 6 Nm.
Material	ST52, hardened
For sensors threaded:	M18
Dimensions L1xL2xL3	40x30x40
Hole spacing e	26 mm
Sensor installation	flushed relative to the set back surface (see drawing)

Technical Image



Pin Map

