

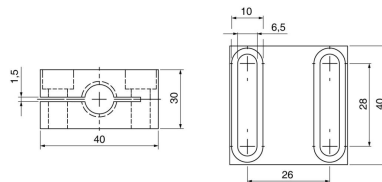
Accessories for inductive and kapacitive sensors | KBM 018 B-A2

- Impact- and shock resistant, protected installation of inductive sensors
- Simple adjustment via slotted holes
- Mount and replace sensor quickly and precicely



TYPE	KBM 018 B-A2
Product ID	Z01213
Description	mounting clamp for metal face sensors
Note	Mounting clamps are fastened to their metal surface using M6 hexagon socket screws. Make sure that the provided stainless steel washers have been placed in-between. The typical torque is 6 Nm.
Material	stainless steel AISI 303
For sensors threaded:	M18
Dimensions L1xL2xL3	40x30x40
Hole spacing e	40 mm
Sensor installation	set back (see drawing)

Technical Image



Pin Map

