

Sensors without integrated amplifier | STC 425 K

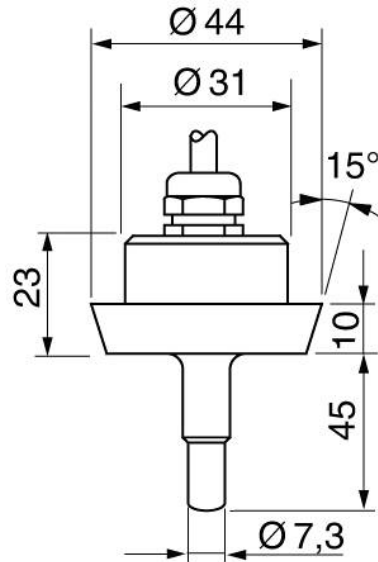
- Screw-in sensor series ST 400 for flow measurement, monitoring or detection
- Corrosion-proof stainless steel housing
- Cable or connector design
- Assemble in T-piece or welding sleeve for flow monitoring in confined spaces
- For connection to an amplifier with analogue or switching output



Triclamp DIN 11851 - sensor length 45 mm - 2 m FEP cable

TYPE	STC 425 K
Product ID	P10632
Medium	Water, oil
Detection range water	1 ... 150 cm/s
Detection range Oil	3 ... 300 cm/s
Process connection	DIN 11851
Ambient temperature	-20 ... 80 °C
Medium temperature	-20 ... 120 °C
Temperature gradient fluids	250 K/min
Start-up time typ.	8 s (2 ... 15 s)
Reaction time typ.	2 s (1 ... 13 s)
Compressive strength	100 bar
Material sensor touched by medium	stainless steel AISI 316 L
Material housing	stainless steel AISI 316 L, PVDF
Protection [EN 60529]	IP 68
Electrical connection	2 m FEP-cable 4x0.25 mm ²
Accessories (in scope of delivery)	screwdriver
Associated amplifiers	SKM 420, SKM 522, SKZ 400
Note	probe with longer cable available on request

Technical Image



Pin Map

Messfühler Probe	3 BU	8	SKZ 400
	1 BN	7	
	2 WH	6	
	4 BK	5	

Messfühler Probe	4 BK	4	SKM 420
	3 BU	3	
	2 WH	2	
	1 BN	1	

Messfühler Probe	4 BK	4	SKM 522
	3 BU	3	
	2 WH	2	
	1 BN	1	