

## Flow rate sensors for fluid media with an end value of 1...10 l/min | SDB 510 GSP

- Flow rate sensor with amplifier
- Meets the requirements of 3A sanitary standards
- Flow rate monitoring during cleaning processes in the food sector
- Robust housing from glass fibre reinforced PBT
- Indication of the flow rate via LED strip
- Triclamp process connection for DN10

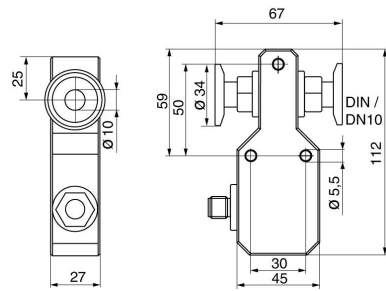


### TriClamp 34 mm - 0,01...6 l/min - PNP-NO

|                                    |                  |
|------------------------------------|------------------|
| <b>TYPE</b>                        | SDB 510 GSP      |
| <b>Product ID</b>                  | P11258           |
| <b>Medium</b>                      | Water            |
| <b>Detection range ml/min</b>      | 0 ... 0 ml/min   |
| <b>Detection range water</b>       | 0.01 ... 6 l/min |
| <b>Working range</b>               | 0.1 ... 6 l/min  |
| <b>Inner diameter d</b>            | 10 mm            |
| <b>Process connection</b>          | Triclamp Ø 10 mm |
| <b>Sensor length L</b>             | 0 mm             |
| <b>Output</b>                      | switching output |
| <b>Output function</b>             | PNP-NO           |
| <b>Supply voltage</b>              | 24 VDC +/- 10 %  |
| <b>Current consumption max.</b>    | 50 mA            |
| <b>Switching current max.</b>      | 200 mA (20 °C)   |
| <b>Reverse polarity protection</b> | ✓                |
| <b>Voltage drop max.</b>           | 2.5 V            |
| <b>Ambient temperature</b>         | 0 ... 60 °C      |
| <b>Medium temperature</b>          | -20 ... 80 °C    |
| <b>Temperature gradient fluids</b> | 400 K/min        |
| <b>Start-up time typ.</b>          | 5 ... 15 s       |
| <b>Reaction time typ.</b>          | 1 s (5 ... 5 s)  |

|   |   |
|---|---|
| <b>Compressive strength</b>               | 20 bar  |
| <b>Material sensor touched by medium</b>  | stainless steel AISI 316 L                            |
| <b>Material housing</b>                   | PBT   |
| <b>Protection [EN 60529]</b>              | IP 67   |
| <b>Electrical connection</b>              | M12 connector   |
| <b>Accessories</b>                        | connecting cable SLG, SLW, SBG, SBW, mounting bracket |
| <b>Accessories (in scope of delivery)</b> | screwdriver   |

Technical Image



Pin Map

