

## Flow rate sensors for fluid media with an end value of 1...10 l/min | SDB 510 GR

- Flow rate sensor with amplifier
- Meets the requirements of 3A sanitary standards
- Flow rate monitoring during cleaning processes in the food sector
- Robust housing from glass fibre reinforced PBT
- Indication of the flow rate via LED strip
- Triclamp process connection for DN10

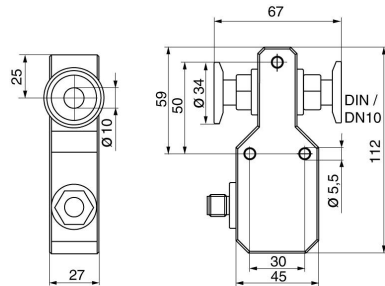


### TriClamp 34 mm - 0,01...6 l/min - relay

<b>TYPE</b>	SDB 510 GR
<b>Product ID</b>	P11279
<b>Medium</b>	Water
<b>Detection range water</b>	0.01 ... 6 l/min
<b>Working range</b>	0.1 ... 6 l/min
<b>Inner diameter d</b>	10 mm
<b>Process connection</b>	Triclamp Ø 10 mm
<b>Sensor length L</b>	67 mm
<b>Output</b>	switching output
<b>Output function</b>	relay NO
<b>Supply voltage</b>	24 VDC +/- 10 %
<b>Current consumption max.</b>	50 mA
<b>Switching voltage max.</b>	30 VAC / 36 VDC
<b>Switching current max.</b>	1000 mA
<b>Reverse polarity protection</b>	✓
<b>Ambient temperature</b>	0 ... 60 °C
<b>Medium temperature</b>	-20 ... 80 °C
<b>Temperature gradient fluids</b>	400 K/min
<b>Start-up time typ.</b>	5 ... 15 s
<b>Reaction time typ.</b>	0.5 ... 10 s
<b>Compressive strength</b>	20 bar

<b>Material sensor touched by medium</b>	stainless steel AISI 316 L
<b>Material housing</b>	PBT
<b>Protection [EN 60529]</b>	IP 67
<b>Electrical connection</b>	M12 connector
<b>Accessories</b>	connecting cable SLG, SLW, SBG, SBW, mounting bracket
<b>Accessories (in scope of delivery)</b>	screwdriver

Technical Image



Pin Map

