

Flow rate sensors for fluid media with an end value of 1...10 l/min | SDB 510 GA

- Flow rate sensor with amplifier
- Meets the requirements of 3A sanitary standards
- Flow rate monitoring during cleaning processes in the food sector
- Robust housing from glass fibre reinforced PBT
- Indication of the flow rate via LED strip
- Triclamp process connection for DN10

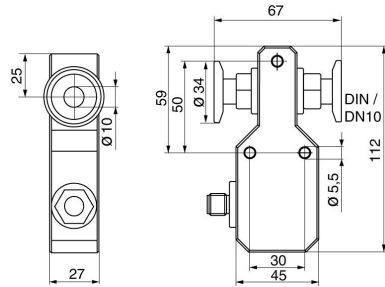


TriClamp 34 mm - 0,01...6 l/min - 4...20 mA

TYPE	SDB 510 GA
Product ID	P11280
Medium	Water
Detection range water	0.01 ... 6 l/min
Working range	0.1 ... 6 l/min
Inner diameter d	10 mm
Process connection	Triclamp Ø 34 mm
Sensor length L	0 mm
Output	analog output 4...20 mA
Supply voltage	24 VDC +/- 10 %
Current consumption max.	50 mA
Load RL	200 ... 500 Ω
Reverse polarity protection	✓
Ambient temperature	0 ... 60 °C
Medium temperature	-20 ... 80 °C
Temperature gradient fluids	400 K/min
Start-up time typ.	5 ... 15 s
Reaction time typ.	0.5 ... 10 s
Compressive strength	20 bar
Material sensor touched by medium	stainless steel AISI 316 L

Material housing	PBT
Protection [EN 60529]	IP 67
Electrical connection	M12 connector
Accessories	connecting cable SLG, SLW, SBG, SBW, mounting bracket
Accessories (in scope of delivery)	screwdriver

Technical Image



Pin Map

