

## Sensors for measuring the air flow rate of gaseous media | LDN 510 GA

- For monitoring of the flow speed of gaseous media in the range of 0,2...60 m/s
- Wear-free, no moving parts
- Monitoring of compressed air supplies
- Without loss of pressure, no constrictions in measuring pipe
- With analogue 4...20 mA output

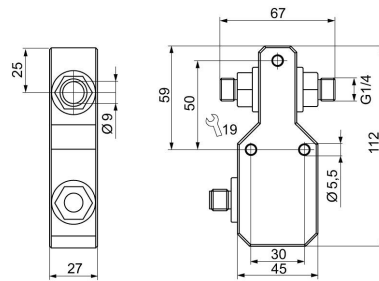


**G1/4**

<b>TYPE</b>	LDN 510 GA
<b>Product ID</b>	P11301
<b>Medium</b>	air
<b>Detection range air</b>	0.2 ... 60 m/s
<b>Working range</b>	0.5 ... 40 m/s
<b>Inner diameter d</b>	9 mm
<b>Process connection</b>	G1/4
<b>Sensor length L</b>	68 mm
<b>Output</b>	analog output 4...20 mA
<b>Output function</b>	non linear
<b>Supply voltage</b>	24 VDC +/- 10 %
<b>Current consumption max.</b>	50 mA
<b>Load RL</b>	200 ... 500 Ω
<b>Reverse polarity protection</b>	✓
<b>Ambient temperature</b>	0 ... 60 °C
<b>Medium temperature</b>	-20 ... 80 °C
<b>Temperature gradient gaseous media</b>	20 K/min
<b>Start-up time typ.</b>	10 ... 30 s
<b>Reaction time typ.</b>	1 ... 20 s
<b>Compressive strength</b>	20 bar

<b>Material sensor touched by medium</b>	stainless steel AISI 316 Ti
<b>Material housing</b>	PBT
<b>Display flow</b>	LED-Array
<b>Protection [EN 60529]</b>	IP 67
<b>Electrical connection</b>	M12 connector
<b>Accessories</b>	connecting cable SLG, SLW, SBG, SBW, mounting bracket
<b>Accessories (in scope of delivery)</b>	4 x gasket G1/4 AFM 34, Screwdriver

Technical Image



Pin Map

