

## Flow rate sensors for fluid media with an end value of 0...1 l/min | SDN 503/1 GSP-DYN

- Flow rate sensor with amplifier
- Robust, compact housing from glass fibre reinforced PBT
- For the detection of micro flow pulses



**G1/4 -micro flow pulses from 0,02 ml/100 ms - PNP NO**

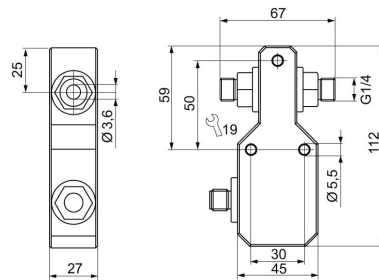
<b>TYPE</b>	SDN 503/1 GSP-DYN
<b>Product ID</b>	P11372
<b>Medium</b>	Water, oil
<b>Detection range ml/min</b>	0 ... 0 ml/min
<b>Detection range water ml/100ms min.</b>	0.02 ml/100ms
<b>Working range water min.</b>	0.04 ml/100ms
<b>Inner diameter d</b>	3.6 mm
<b>Process connection</b>	G1/4
<b>Sensor length L</b>	68 mm
<b>Output</b>	switching output
<b>Output function</b>	PNP-NO
<b>Turn off delay</b>	0,5...10 s adjustable
<b>Supply voltage</b>	24 VDC +/- 20 %
<b>Current consumption max.</b>	50 mA
<b>Switching current max.</b>	200 mA (20 °C)
<b>Reverse polarity protection</b>	✓
<b>Voltage drop max.</b>	2.5 V
<b>Ambient temperature</b>	0 ... 60 °C
<b>Medium temperature</b>	-20 ... 80 °C
<b>Start-up time typ.</b>	0 ... 15 s

<b>Reaction time typ.</b>	0.1 s (0 ... 0 s)
<b>Compressive strength</b>	20 bar
<b>Material sensor touched by medium</b>	stainless steel AISI 316 Ti
<b>Material housing</b>	stainless steel AISI 303, brass, PA, PBT
<b>Protection [EN 60529]</b>	IP 67
<b>Electrical connection</b>	M12 connector
<b>Accessories</b>	connecting cable SLG, SLW, SBG, SBW, mounting bracket

**Accessories (in scope of delivery)**

4 x gasket G1/4 AFM 34, Screwdriver

Technical Image



Pin Map

