

Air Flow Sensors with integrated amplifier for explosive areas | LC 521/1 GSP-Ex22

- low monitoring of gaseous media in hazardous areas
- Installation in zone 2 (gas) and zone 22 (dust)
- Switching point adjustable on site during operation
- Stainless steel housing

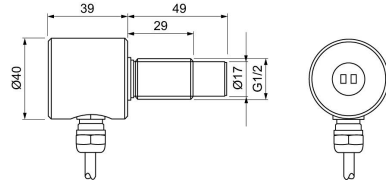


**G1/2 - sensor length 49 mm - 24 VDC - PNP
normally open contact**

TYPE	LC 521/1 GSP-Ex22
Product ID	P11406
Thread/sleeve	G1/2
Medium	gaseous media
Detection range air	0.5 ... 20 m/s
Sensor length L	49 mm
Output	switching output
Output function	PNP-NO
Supply voltage	24 VDC +/- 10 %
Current consumption max.	35 mA
Switching current max.	200 mA
Ex area of use	Zone 2, Zone 22
Certificate of conformity	EGE 21.0010 X
ATEX marking gas	Ex II 3 G Ex ic mc IIC T4...T3 Gc
Ex Marking ATEX Dust	Ex II 3 D Ex ic mc IIIC T135 °C Dc
Temperature range in T4	-10 ... 60 °C
Temperature range in T3	-10 ... 60 °C
Temperature range dust-Ex	-10 ... 60 °C
Start-up time typ.	20 s
Reaction time typ.	5 s
Compressive strength	1 bar

Material housing	stainless steel AISI 316 Ti, ceramics, PBT-GF30, PUR
Display flow	3-colour-illuminated dot red / yellow / green
Protection [EN 60529]	IP 67
Electrical connection	2 m PUR-cable 3x0.5 mm ²

Technical Image



Pin Map

