

## Air Flow Sensors with integrated amplifier for explosive areas | LC 521/1 GA-Ex22

- Flow monitoring of gaseous media in hazardous areas
- Installation in zone 2 (gas) and zone 22 (dust)
- Stainless steel housing

**G1/2- sensor length 49 mm - 24 VDC - Analog  
output 4...20mA**



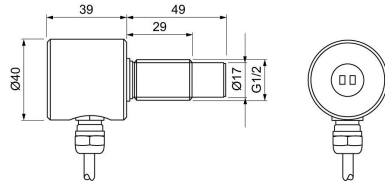
<b>TYPE</b>	LC 521/1 GA-Ex22
<b>Product ID</b>	P11423
<b>Thread/sleeve</b>	G1/2
<b>Medium</b>	gaseous media
<b>Detection range air</b>	0.5 ... 20 m/s
<b>Sensor length L</b>	49 mm
<b>Output</b>	analog output 4...20 mA
<b>Output function</b>	non linear
<b>Supply voltage</b>	24 VDC +/- 10 %
<b>Current consumption max.</b>	35 mA
<b>Ex area of use</b>	Zone 2, Zone 22
<b>Certificate of conformity</b>	EGE 21.0010 X
<b>ATEX marking gas</b>	Ex II 3 G Ex ic mc IIC T4...T3 Gc
<b>Ex Marking ATEX Dust</b>	Ex II 3 D Ex ic mc IIIC T135 °C Dc
<b>Temperature range in T4</b>	-10 ... 60 °C
<b>Temperature range in T3</b>	-10 ... 60 °C
<b>Temperature range dust-Ex</b>	-10 ... 60 °C
<b>Start-up time typ.</b>	20 s
<b>Reaction time typ.</b>	5 s
<b>Compressive strength</b>	1 bar
<b>Material housing</b>	stainless steel AISI 316 Ti, ceramics, PBT-GF30, PUR

**Display flow** 2-colour-illuminated dot red / green

**Protection [EN 60529]** IP 67

**Electrical connection** 2 m PUR-cable 3x0.5 mm<sup>2</sup>

Technical Image



Pin Map

