

# Capacitive sensors for high-temperature use

## | KFC 050 GSP-L50

Capacitive filling level monitor for top installation with stable stainless steel shaft and PTFE tip for adhesive media

- With chemical-resistant PTFE tip
- Robust stainless steel housing
- For use in medium temperatures up to 120° C
- For use in aggressive media

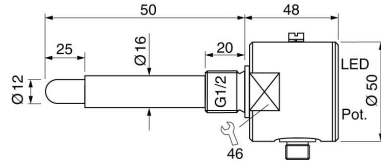


### G1/2 - sensor length 50 mm - Output PNP NO

<b>TYPE</b>	KFC 050 GSP-L50
<b>Product ID</b>	P21161
<b>Switching Point</b>	-6 mm
<b>Sensor length L</b>	50 mm
<b>Output</b>	switching output
<b>Output function</b>	PNP-NO
<b>Supply voltage</b>	18 ... 33 VDC
<b>Current consumption max.</b>	10 mA
<b>Short circuit proof</b>	yes
<b>Overcurrent release</b>	250 mA
<b>Reverse polarity protection</b>	✓
<b>Voltage drop max.</b>	2 V
<b>Switching frequency</b>	5 Hz
<b>Ambient temperature</b>	-25 ... 120 °C
<b>Compressive strength (at 25°C)</b>	16 bar
<b>EMC-class</b>	A
<b>Material sensor touched by medium</b>	PTFE
<b>Material housing</b>	stainless steel AISI 316 Ti
<b>Seal material</b>	FFKM (Kalrez)

Display	✓
Protection [EN 60529]	IP 67
Electrical connection	M12 connector
Accessories	connecting cable SLG 3... or SLW 3...

Technical Image



Pin Map

