

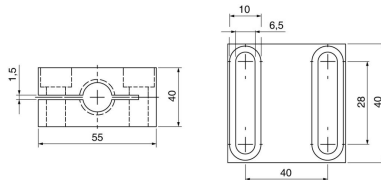
## Accessories for inductive and kapacitive sensors | KBM 030 A-ST52

- Impact- and shock resistant, protected installation of inductive sensors
- Simple adjustment via slotted holes
- Mount and replace sensor quickly and precicely



<b>TYPE</b>	KBM 030 A-ST52
<b>Product ID</b>	Z01211
<b>Description</b>	mounting clamp for metal face sensors
<b>Note</b>	Mounting clamps are fastened to their metal surface using M6 hexagon socket screws. Make sure that the provided stainless steel washers have been placed in-between. The typical torque is 6 Nm.
<b>Material</b>	ST52, hardened
<b>For sensors threaded:</b>	M30
<b>Dimensions L1xL2xL3</b>	55x40x40
<b>Hole spacing e</b>	40 mm
<b>Sensor installation</b>	flushed relative to the set back surface (see drawing)

Technical Image



Pin Map

